

May Newsletter



Creative Speech Solutions LLC
PEDIATRIC THERAPY CENTER

Office Addresses & Information:

SUMMIT OFFICE:

151 SUMMIT AVENUE,
SUMMIT, NJ 07901

MONTCLAIR OFFICE:

198 BELLEVUE AVENUE,
MONTCLAIR, NJ 07043

CONTACT INFORMATION:

P: (908)-598-0228

[WEBSITE](#)

Highlighted Information:

1. Camp PAL Registration Info
2. Summer Scheduling
3. Camp PAL Volunteer Summer Interns
4. Better Speech and Hearing Month Giveaway
5. CSS Open House Information
6. Local May Activities
7. Van Vleck House & Gardens
8. Montclair Disability Pride Parade



BE SURE TO FOLLOW US ON SOCIAL MEDIA FOR WEEKLY UPDATES AND NEWS!



creativespeechsolutions



Creative Speech Solutions,
LLC



Creative Speech Solutions



Creative Speech Solutions





Creative Speech Solutions LLC
PEDIATRIC THERAPY CENTER



CAMP PAL 2023

**COME JOIN THE FUN THIS
SUMMER**

REGISTER NOW!

at Southern Boulevard School
192 Southern Boulevard
Chatham, NJ

At Camp PAL, your child will participate in an innovative, creative, and therapeutic camp run by highly-talented and knowledgeable team of therapists at Creative Speech Solutions, LLC.

registration@creativespeechsolutions.com



Creative Speech Solutions LLC
PEDIATRIC THERAPY CENTER



OPEN

for

SUMMER SCHEDULING



Summer is the perfect time to add extra sessions and catch up therapy.

Extra summer sessions help children make therapeutic gains while school is out, to catch up and be ready for school in September!

Click here to fill out the Summer Scheduling Form





We're Looking For

2023 CAMP PAL VOLUNTEER SUMMER INTERNS

- ✓ Creative Speech Solutions, LLC is looking for Speech Pathology or Occupational Therapy students for our Volunteer Summer Internship program who are looking to gain necessary observation hours needed to apply to graduate school.
- ✓ CSS is actively recruiting for capable, enthusiastic and highly motivated students who may require observation hours/ volunteer experience for school. CSS will provide interns with strong performance detailed and customized letters of recommendations for graduate school and also three (3) in-depth MANDATORY training sessions prior to the start of camp (Dates are May 22nd and June 12th from 10:00am-12:00pm via Zoom and June 28th from 12:30-2:30 in person in our Summit office).



**APPLY NOW
AND JOIN US
ON THIS
AMAZING
ADVENTURE!**

(908) 598-0228

www.creativespeechsolutions.com



Creative Speech Solutions LLC
PEDIATRIC THERAPY CENTER

GIVEAWAY

BETTER SPEECH AND HEARING MONTH

FOR MAY "BETTER SPEECH AND HEARING MONTH
CSS WANTS TO GIVE AWAY THE MOST USED TOY IN
SPEECH THERAPY!

*The winner will be announced on May 26th, at 2pm on Instagram!



Creative Speech Solutions LLC
PEDIATRIC THERAPY CENTER

Presents

OPEN

HOUSE



SCREENINGS
ARTS & CRAFTS
SENSORY GAMES
OBSTACLE COURSE
GIVEAWAYS

MAY

20

12 pm - 3 pm

151 Summit Ave,
Summit, NJ 07091
(908) 598 0228



151
Summit
Medical Arts
Building

Local May Activities

The Sky Above

When: Saturday, May 6th, 2023 at 5pm

Where: Raritan Valley Community College

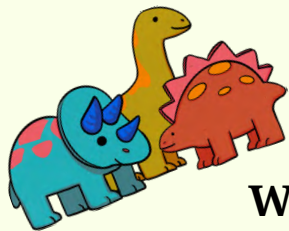
Cost: *Reservations are recommended*

\$10 for one show; \$18 for two shows back to back

"Welcome to a comfortable and judgment-free zone to learn some astronomy. This sensory-friendly astronomy and music show is specially designed for families with children on the Autism spectrum and other developmental disorders. Neurotypical children are welcome as well. The program is presented on a kindergarten level, but all ages are welcome. Enjoy music, laser lights, stories, and information about the planets, Moon, and constellations. During the show, the doors remain open so children may leave and return if they choose. Lights are kept dim (instead of dark) and music is at a consistent level."

For more information and to buy tickets, please email:

planet@raritanval.edu



Field Station: Dinosaurs

When: Spring season opens May 27th-June 25th;

Saturdays and Sundays 10 am-6 pm

Where: Overpeck County Park, Leonia, NJ.

Cost: \$17.50

Day pass admission is an anytime ticket and can be used any day and time during the 2023 season.

"The Field Station is a wild scientific expedition in Bergen County's beautiful Overpeck Park, on the banks of a scenic creek and surrounded by natural woods. Over 30 life-sized, moving, realistic dinosaurs come to life thanks to the brilliant engineering of the world's leading roboticists and the imagination of our artists."

For more information and to buy tickets, please visit:

<https://fieldstationdinosaursnj.aluvii.com/store/shop/categoryproducts?id=1&offset=240&categoryId=1>

You're invited to a

Sensory Celebration

at Van Vleck House & Gardens

Friday, May 12th

4:00 PM - 7:00 PM

In recognition of Autism Acceptance Month, this event invites you to explore the Van Vleck Gardens using your senses as your guide. Activity stations throughout the gardens are self-paced, optional and focus on using our senses to discover nature through art, movement, literature, planting and exploration walks. This outdoor family program is an inclusive event, open to people of all ages and abilities and will be held entirely outdoors.



Also joining us:

Eyes of the Wild
Live Animal Exhibit

Cornerstone Montclair &
The General Store

Popcorn for the People

Montclair Art Museum



Registration Required.
Visit website for details. \$10/family for members, \$15/family for non-members

Sponsored by:

Emer Featherstone &

Event Supporters & Donations:

Brenda Bingham

Kathy and John Wessling



The Montclair Foundation/Van Vleck House & Gardens 21 Van Vleck St., Montclair NJ 07042

www.montclairfoundation.org/event/sensory-celebration-2023 - For more information contact: michellew@montclairfoundation.org

Van Vleck House & Gardens is owned by The Montclair Foundation, a 501(c)(3) organization supporting non-profits in our community.

Please join us for the 3rd Annual
MONTCLAIR DISABILITY PRIDE PARADE
Honoring disability rights activist Judy Heumann



**Walk and Roll Parade
and Rally with
disability activists,
families, friends,
and allies!**

Saturday, May 20th 1-4PM

Raindate: Sunday, May 21st 1-4PM

1:00pm: We will assemble at Heningburg field, off Chestnut Street on Midland Avenue, Montclair, NJ

1:30-4:00pm: We will walk and roll to Rand Park for rally and speakers

Individuals, groups, or organizations welcome to march under their banners in support of disability rights.

**SPECIAL GUEST SPEAKER STEVE WAY
FROM THE HIT HULU SHOW, "RAMY"**

Sponsored by:

The Montclair Friday Group

Montclair State University Disability Caucus

Montclair People with Disabilities Advisory Committee

*American Sign Language interpretation will be provided

QUESTIONS: alma@parentswhorock.com